

## S P E C I F I C A T I O N S

Moxi GO™ System	
Detection Channels:	4 (2 fluorescent, cell count, cell volume)
Laser wavelength:	488 or 532 nm
Number of PMT's:	Configurable 1 or 2
Optical Detection Region:	561 nm/LP (e.g. PE, PI, tdTomato) and or 525/45 nm (e.g. FITC, GFP)
Cell Size & Count Detection:	Impedimetric (Coulter Principle)
Display:	800 x 480 color touchscreen
Resolution:	1000 histogram bins
Weight:	7 lbs
Dimensions:	9.0"L x 7.0"W x 4.25"H
Battery:	Lithium Ion, 4500 mAh
Data Storage:	16 MB
AC Power:	100-240 V, 50/60 Hz, .2 Amps
Connectivity:	USB on-the-go (PC or MAC compatible)
Data Output Format:	FCS 3.1 and screen shots (.bmp)
Pre-Programmed Tests:	Open Flow, Apoptosis, Cell Cycle, Multiplex Bead Assay, Viability, In Cell Protein Quant Overlay
Open Platform:	561 nm/LP: PE, PI, RFP (e.g. DsRed, tdTomato), 7-AAD, PE-Texas Red 525/45 nm: FITC, Alexa Fluor 488, GFP, Calcein

μ-Flow Cassette Performance (2 tests per cassette)	
Effective Diameter - Size Range (μm):	3 - 26 μm
Cell Volume (fL):	14 - 9202 fL
Measurement Time:	10 seconds
Concentration:	10,000 to 1,000,000 cells per ml
Sample Volume (μL):	75 μL

Contact ORFLO today to learn how the Moxi GO will Discover Faster, Publish Quicker. Call 855.879.6694

Tel: 855.879.6694  
Email: info@orflo.com  
Web: www.orflo.com

© Copyright 2017 Orflo Technologies. All rights reserved.  
The Orflo logo is a registered trademark of Orflo Technologies.  
Moxi GO is a trademark of Orflo Technologies.  
260 Northwood Way, Ketchum, ID 83340.



Next Gen  
Flow  
Cytometry™

# Moxi GO™ II

Up To Four  
Parameter Flow  
Base system starts at \$4995



Next Gen  
Flow  
Cytometry™

1

### Prepare Sample

- Use one of ORFLO's validated kits or create your own cocktail.



2

### Insert Cassette

- Moxi GO will auto-align to the cassette and auto-calibrate.



3

### Pipette Sample

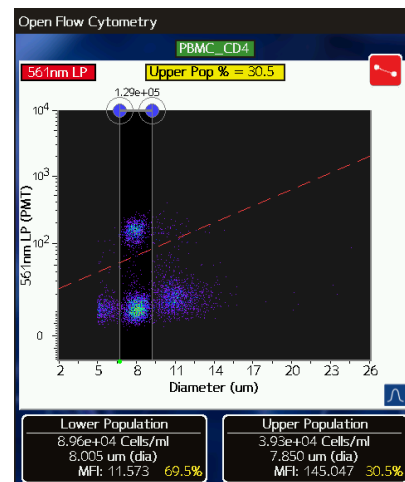
- 75uL of labeled sample in cassette.
- Moxi GO will auto-run when door is closed.



4

### Analyze Results

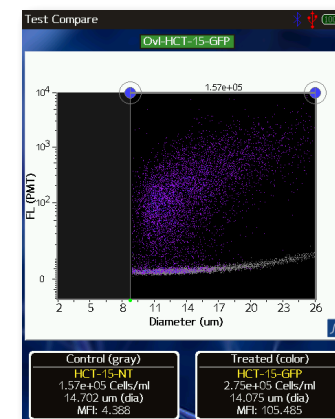
- Adjust gates on device.
- Save screenshots (.bmp).
- Export FCS 3.1 files for PC or MAC analysis.



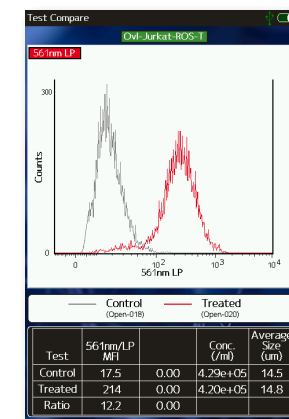
## Build out a fully capable Moxi GO II™ Flow Cytometer Cell Counter in affordable Modules

<p><b>Moxi GO™ II</b></p> <p>Cell Count Cell Size</p> <p><b>Promo Price: \$4,995</b> Reg Price: \$9,495 PN: MXG302</p>	<p><b>Moxi GO™ II</b> Optics Module</p> <p>FITC/GFP Cell Size</p> <p><b>Promo Price: \$3,495</b> Reg Price: \$3,414 PN: MXG502</p>	<p><b>Moxi GO™ II</b> Optics Module</p> <p>PE/PI/RFP Cell Size</p> <p><b>Promo Price: \$3,495</b> Reg Price: \$3,384 PN: MXG501</p>	<p><b>ORFLO OS™</b></p> <p>3 Year Warranty</p> <p><b>Promo Price: \$3,495</b> Reg Price: \$3,300 PN: MXS202</p>
--	--	---	---

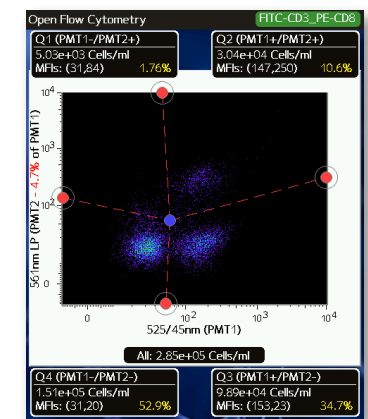
### ORFLO OS: Intuitive • Touch Screen • Instant Lab Reports



**GFP Checks**  
Touch Screen Gating



**Protein Quant**  
On-board Overlay App



**Rapid Phenotyping**  
Auto Compensation

### Simple Apps for Complex Applications

- CRISPR/GFP Checks • Cell Health
- Mito Potential • ROS Quant
- Apoptosis • Phenotyping
- In-Cell Westerns • DIY Multiplex

