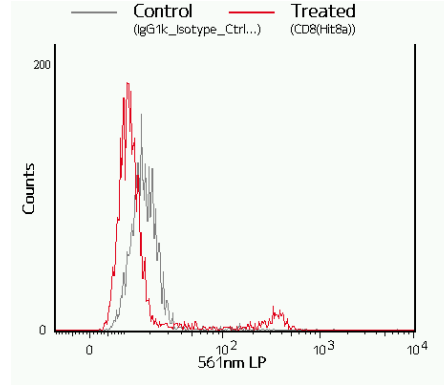
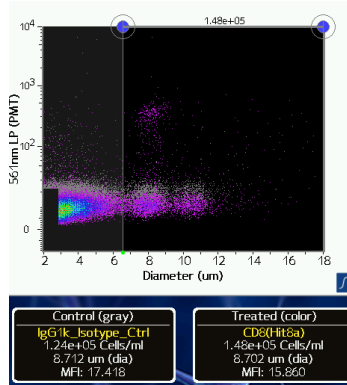


Anti-Human CD8a PE

Catalog #: 300907 (25 tests); 300908 (100 tests)

Alternative names: CD8-alpha, Leu-2a

RUO: For Research Use Only, manufactured by BioLegend



Staining of PMBC cells with Anti-Human CD8-PE (red) vs mIgG1k Isotype control (gray).

Product information

Clone: HIT8a

Concentration: 5-20µL/test

Host/Isotype: Mouse IgG1, K

Formulation: PBS (pH 7.2), 0.09% sodium azide

Temperature Storage: Store at 2-8°C. Light sensitive

Use By: See vial for Lot specific info

Description *(from www.BioLegend.com)*

CD8a is a 32-34 kD type I glycoprotein. It forms a homodimer (CD8a/a) or heterodimer (CD8a/b) with CD8b. CD8, also known as T8 and Leu2, is a member of the immunoglobulin superfamily found on the majority of thymocytes, a subset of peripheral blood T cells, and NK cells (which express almost exclusively CD8a homodimers). CD8 acts as a co-receptor with MHC class I-restricted T cell receptors in antigen recognition and T cell activation and has been shown to play a role in thymic differentiation. Two domains in CD8a are important for function: the extracellular IgSF domain binds the α_3 domain of MHC class I and the cytoplasmic CXCP motif binds the tyrosine kinase p56 Lck.

Applications Tested

This antibody has been pre-titrated and tested by flow cytometric analysis of normal human peripheral blood cells. Cell number should be determined empirically but can range from 10e5 to 10e8 cells/test. Following staining, the optimal concentration for fluorescence sensitivity on the Moxi Go is 1e5 to 5e5 cells/mL.

Related Products

400112 PE Mouse IgG1,K Isotype Control PE

References: S., L. Bloumsell, et al. eds. 1995. Leucocyte Typing V: White Cell Differentiation Antigens. Oxford University Press. New York.