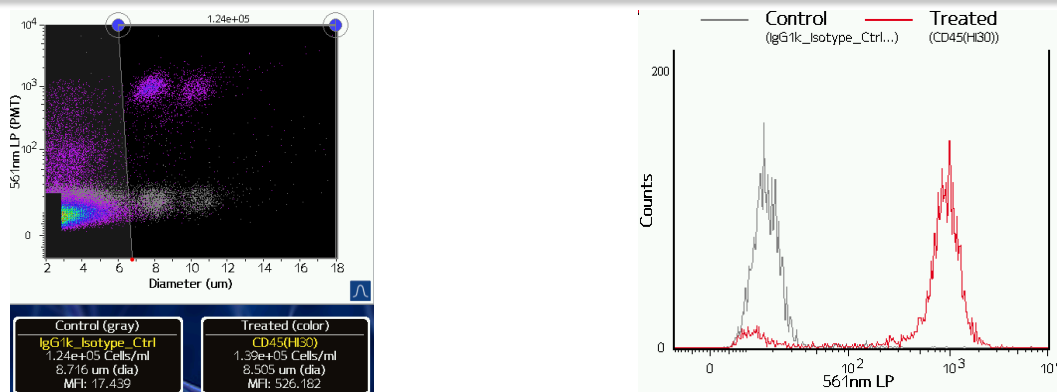


## Anti-Human CD45 PE

Catalog #: 304007 (25 tests); 304008 (100 tests); 304039 (500 tests); 304058 (100µg)

Alternative names: LCA, T200

RUO: For Research Use Only, manufactured by BioLegend



Staining of PMBC cells with Anti-Human CD45-PE (red) vs mIgG1,k Isotype control (gray).

### Product information

**Clone:** HI30

**Concentration:** 5-20µL/test

**Host/Isotype:** Mouse IgG1, K

**Formulation:** PBS (pH 7.2), 0.09% sodium azide

**Temperature Storage:** Store at 2-8°C. Light sensitive

**Use By:** See vial for Lot specific info

### Description *(from www.BioLegend.com)*

CD45 is a 180-240 kD single chain type I membrane glycoprotein also known as leukocyte common antigen (LCA) and T200. It is a tyrosine phosphatase expressed on the plasma membrane of all hematopoietic cells, except erythrocytes and platelets. CD45 is a signaling molecule that regulates a variety of cellular processes including cell growth, differentiation, cell cycle, and oncogenic transformation. CD45 plays a critical role in T and B cell antigen receptor-mediated activation by dephosphorylating substrates including p56Lck, p59Fyn, and other Src family kinases

### Applications Tested

This antibody has been pre-titrated and tested by flow cytometric analysis of normal human peripheral blood cells. Cell number should be determined empirically but can range from 10e5 to 10e8 cells/test. Following staining, the optimal concentration for fluorescence sensitivity on the Moxi Go is 1e5 to 5e5 cells/mL.

### Related Products

400112 PE Mouse IgG1,K Isotype Control PE

References: Knapp W, *et al.* Eds. 1989. Leucocyte Typing IV. Oxford University Press. New York.