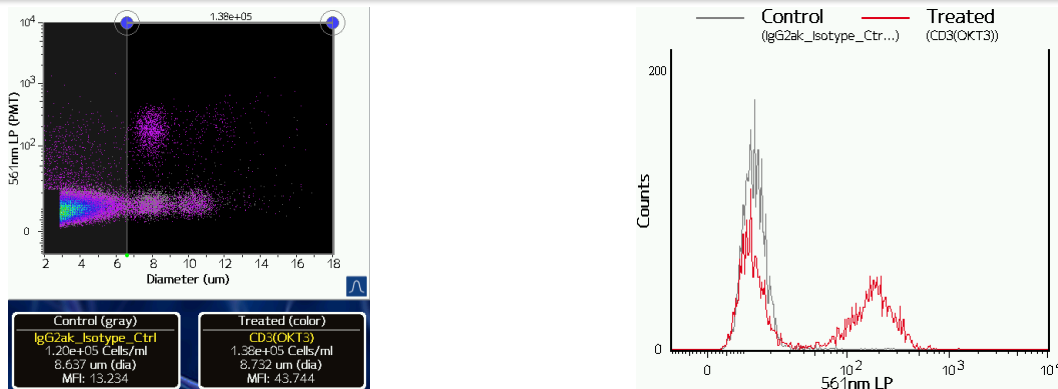


## Anti-Human CD3 PE

Catalog #: 317307 (25 tests); 317308 (100 tests)

Alternative names: T3, CD3ε

RUO: For Research Use Only, manufactured by BioLegend



Staining of PMBC cells with Anti-Human CD3-PE (red) vs mIgG2ak Isotype control (gray).

### Product information

**Clone:** OKT3

**Concentration:** 5-20µL/test

**Host/Isotype:** Mouse IgG2a, K

**Formulation:** PBS (pH 7.2), 0.09% sodium azide

**Temperature Storage:** Store at 2-8°C. Light sensitive

**Use By:** See vial for Lot specific info

### Description *(from www.BioLegend.com)*

CD3ε is a 20 kD chain of the CD3/T cell receptor (TCR) complex, which is composed of two CD3ε, one CD3γ, one CD3δ, one CD3ζ (CD247), and a T cell receptor (α/β or γ/δ) heterodimer. It is found on all mature T lymphocytes, NK T cells, and some thymocytes. CD3, also known as T3, is a member of the immunoglobulin superfamily that plays a role in antigen recognition, signal transduction, and T cell activation.

### Applications Tested

This antibody has been pre-titrated and tested by flow cytometric analysis of normal human peripheral blood cells. Cell number should be determined empirically but can range from 10e5 to 10e8 cells/test. Following staining, the optimal concentration for fluorescence sensitivity on the Moxi Go is 1e5 to 5e5 cells/mL.

### Related Products

400213 PE Mouse IgG2a, K Isotype Control PE

References: Knapp W, *et al.* Eds. 1989. Leucocyte Typing IV. Oxford University Press. New York.